

INSTALLATION MANUAL:

COR-5110200

JEEP GLADIATOR REAR SWAY BAR BRACKET

2020+ JT



INCLUDED ITEMS

5110200 Jeep Gladiator Rear Sway Bar Reinforcement Brackets (2020+ JT)			
QTY	Part Number	Description	Class/Grade
1	5110200L	Jeep Gladiator Rear Frame Rail Bracket Driver Side	N/A
1	5110200R	Jeep Gladiator Rear Frame Rail Bracket Passenger Side	N/A
2	11114704	M12-1.5 x 70mm Yellow Zinc Finish Hex Cap Screw	Class 10.9
2	0145171	M12-1.5 Zinc Finish Steel Nylon Insert Lock Nut	Class 8
4	11103710	M12 x 24mm OD Yellow Zinc Finish Steel Flat Washer	Grade HV200

Product Notes and Features:

The Jeep Gladiator Rear Sway Bar Reinforcement Bracket Kit includes all the necessary hardware to reinforce the rear sway bar frame brackets on your Jeep JT with a better mounting solution.

- Innovative, double-shear design that significantly decreases the stress applied to the sway bar mounting locations during extreme driving conditions, designed to be used in conjunction with the original sway bar bracket
- Class 10.9 M12-1.5 x 70mm bolts and washers for securing sway bar links
- M12-1.5 NyLock Nuts are included for customers who have already damaged the rear sway bar frame brackets
- **Repair the factory sway bar bracket if it is already damaged before installing this product**



DISCLAIMER

WARNING:

Suspension systems and their components are designed to enhance your vehicle's off-road performance. This may cause your vehicle to handle differently, on and off-road. Always wear your seatbelt and take extra care when driving a modified vehicle. Failure to do so can result in loss of control which may result in a rollover causing serious injury, or even death to the driver and/or passengers of the vehicle. Regular maintenance and consistent inspections are required to keep your modified vehicle safe and functioning properly. These suspension systems and any components should be installed by certified technicians only. Attempts to install these products without proper knowledge can lead to poor performance, or possible failure, which may jeopardize the safety of the vehicle and its passengers. The installer is responsible for proper installation ensuring a safe and properly functioning vehicle. Take extra care when operating a modified vehicle and thoroughly inspect your vehicle before and after every off-road use.

Read the instruction set in its entirety before attempting the installation.

NOTE:

This product may require general welding, fabrication, and automotive mechanic skills. Welding should only be done by a competent welder. Clayton Off Road implies no guarantees or warranties and is not liable for improper installation. Some grinding and fitment may be required when installing this product. Every vehicle varies slightly, and some fabrication and/or modification may be required.

ATTENTION:

It is the customer's responsibility to thoroughly inspect all received parts to ensure they are assembled correctly and fully welded. Please carefully examine all weld seams and verify that bolt-through holes are properly aligned. Some Clayton Off Road products are permanent, non-removable, weld-on solutions. **If a defect or issue is found after installation, especially with permanent weld-on components, it may be difficult or impossible to correct.** Inspecting the part(s) received beforehand helps prevent unnecessary and avoidable complications.

ATTENTION: TORQUE SPECIFICATION

When working on any vehicle, it is good practice to torque suspension/weight-bearing components while the vehicle is resting under its load. This instruction set, as well as any other Clayton Off Road instruction set, assumes the installer will tighten any suspension-related components properly, to the recommended torque specification, when the vehicle is resting safely under its own weight.

INSTALLATION INSTRUCTIONS

Take this product to a licensed professional if you are hesitant about the installation process!

The following instructions apply to the listed components below:

- 5110200 Jeep Gladiator Rear Sway Bar Reinforcement Brackets (2020+ JT)

We strongly recommend having basic mechanic's hand tools, sockets, wrenches, vehicle jacks and stands, and other common tools readily available. Installing an aftermarket lift kit is a detailed process, and having the right tools on hand will ensure a smoother installation.

As always, feel free to contact us anytime during your installation – you can count on us to help!

COR-5110200

5110200 Installation Tools Required:

- 10, 13, 15, 19mm, socket/wrench
- Impact drill
- Torque wrench
- Grinder/cut-off wheel (Only required for original bracket repairs)

INSTALLATION INSTRUCTIONS

Take this product to a licensed professional if you are hesitant about the installation process!

1. Position the vehicle on a flat surface and locate the section of the frame rail located just behind the rear tires. The rear tires do not need to be removed for this installation.



Figure 1: Gladiator JT parked on a flat surface

INSTALLATION INSTRUCTIONS

2. Locate the (2) frame bolts fastening the brake light wiring harness and remove them with a 13mm socket. You will reuse these bolts, as well as the bracket. Remove the sway bar bolt using a 15mm socket. You are given a longer M12-1.5 x 70mm bolt to use. Finally, remove the brake line bracket using a 10mm socket and move it out of the way.

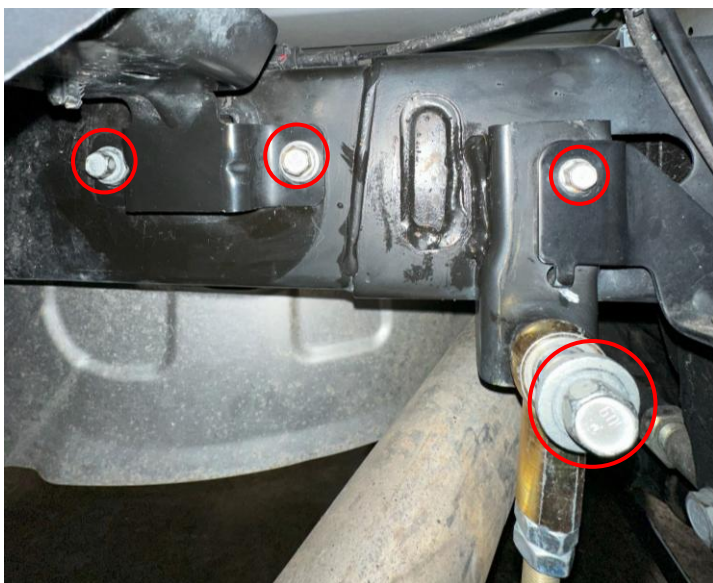


Figure 2: Bolt locations to be removed (passenger side)



Figure 3: Bolts removed

NOTE:

Your vehicle may have a black heat shield installed at this location. You will need to remove and discard the shield, as it will not be reused.

INSTALLATION INSTRUCTIONS

3. With the wiring harness bracket and bolts removed, place the bracket onto the frame, with the back "C" wedge plate sitting flush against the upper section of the original rear sway bar frame bracket.

Begin threading the new M12-1.5 x 70mm bolt through the new bracket, sway bar link, and into the PEM on the other side of the original frame bracket. Swing the bracket up and over the square cross member extrusion, and reinstall the frame rail bolts through the holes with the wiring harness bracket mounted over the new sway bar bracket (See Figure 4).



Figure 4: Installed bracket (driver side)

TIP:

If you are having trouble aligning the new bracket to the frame rail bolts, tighten the new sway bar bolt down further. This will pull the bracket into alignment.

You can also install the old sway bar bolt into the PEM and grab the bolt head with vice grips and forcibly bend the old bracket until you can thread each bolt in by hand. Be careful not to overbend. Doing this with the new bracket installed may be easier, depending on how damaged the old bracket is.

INSTALLATION INSTRUCTIONS

4. Tighten the bracket down, alternating from the sway bar bolt to the frame rail bolts every couple of turns. When the new bracket is sitting flush against the frame, tighten the frame bolts down. Torque the sway bar bolt to 60 ft-lbs.

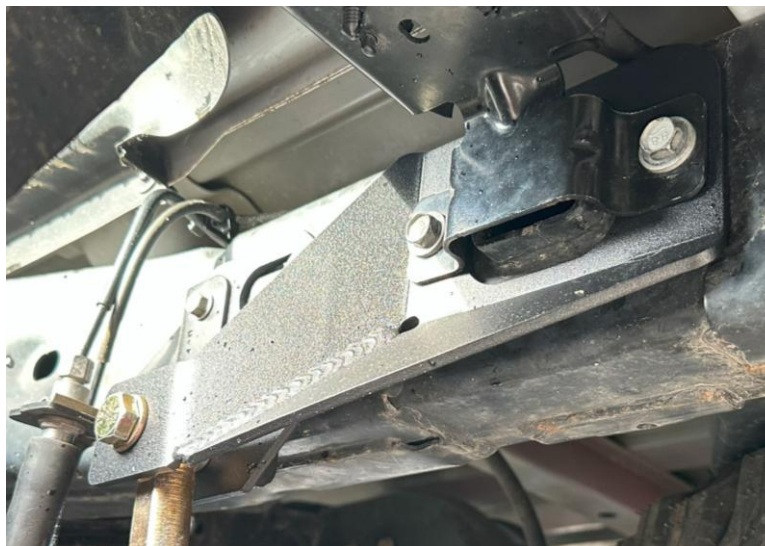
Once the mounting bolts are tight, you may reinstall the 10mm bolt with the brake line bracket. Align the key on the bracket to the middle hole on the "C" wedge plate of the bracket, as seen in Figure 5.



Figure 5: Brake line bracket mounted over "C" wedge plate

INSTALLATION INSTRUCTIONS

5. Repeat steps 2-4 on the opposite side of the vehicle, and the installation is complete. Please review the post-installation checklist before driving your vehicle.



POST-INSTALLATION CHECKLIST:

- M12-1.5 x 70mm sway bar bolts are torqued to 60-70 lb-ft
- The original frame rail bolts are reinstalled and tightened down
- The new sway bar reinforcement brackets sit flush against the frame rail
- The brake line bracket is reinstalled over the "C" plate

