

INSTALLATION MANUAL:

COR-1306102

Jeep Grand Cherokee Front Brake Lines
(1999-2004, WJ)



INCLUDED ITEMS

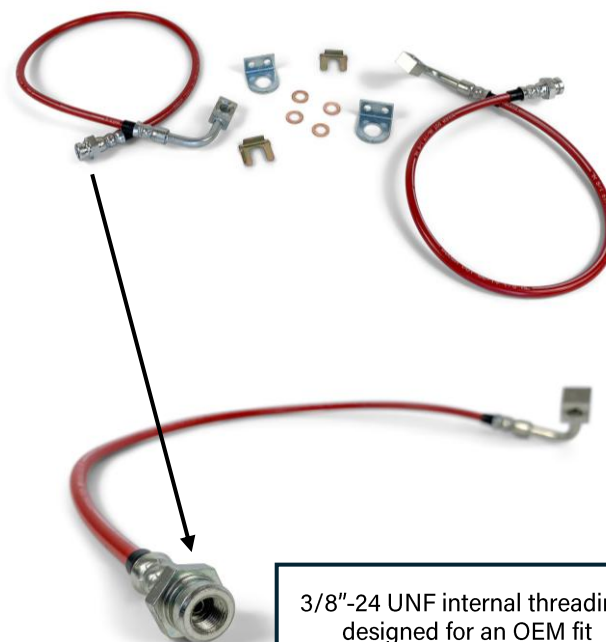
1306102 Jeep Grand Cherokee Front Brake Lines - (1999-2004, WJ)

QTY	Part Number	Description	Class/Grade
2	1306102	Left/Right Brake Line Hose Assembly	N/A
2	BQB244	Brake Hose Mount Bracket	N/A
2	BQ 3052	Brake Hose Retaining Clip	N/A
4	BQ 1016	Banjo Fitting Copper Crush Washers (10mm hole)	N/A

Product Notes and Features:

The Jeep Front Brake Line Kit (1999-2004, WJ) includes all necessary hardware to replace the front OEM braking system with extended, anti-expansion hosing. Included brackets provide safe rerouting options to keep the brake line away from numerous pinch points on the vehicle's suspension.

- For use in the front of the 1999-2004 Jeep WJ Grand Cherokee
- Designed to meet the demands of rugged terrain and daily driving
- OEM-style hydraulic brake fittings ensure a precise, no-leak fit
- Approximately 36" hose length allows for use in many different vehicle suspension setups
- Brake lines are side-specific
- 2 front brake lines included (one left and one right flexible hose)



Some photos from this installation are from a Jeep Wrangler JK front brake installation, but the process remains the same for the Grand Cherokee WJ.

INSTALLATION INSTRUCTIONS

TOOLS REQUIRED FOR INSTALLATION

- Basic hand tools
- Metric ratchet wrench set,
- Metric socket set,
- Standard ratchet wrench set
- Standard socket set,
- Vice grips/Pliers
- Brake fluid and rags

*****Take this product to a licensed professional if you are hesitant about the installation process!*****

*****Remove the tires and jack the vehicle on stands for easy wheel-well access*****

1. Begin on either side of the vehicle but note that the brake lines are side specific. Remove all ABS cable clips/zip ties holding the line to the brake hose. This includes the zip ties at the bottom of the coil, the c-clips retaining the ABS line next to the brake hose, the OEM control arm mount, and the frame mount. See figures below. Take care when cutting the zip ties so you don't accidentally cut the ABS cable.



Coil bucket zip ties to be cut

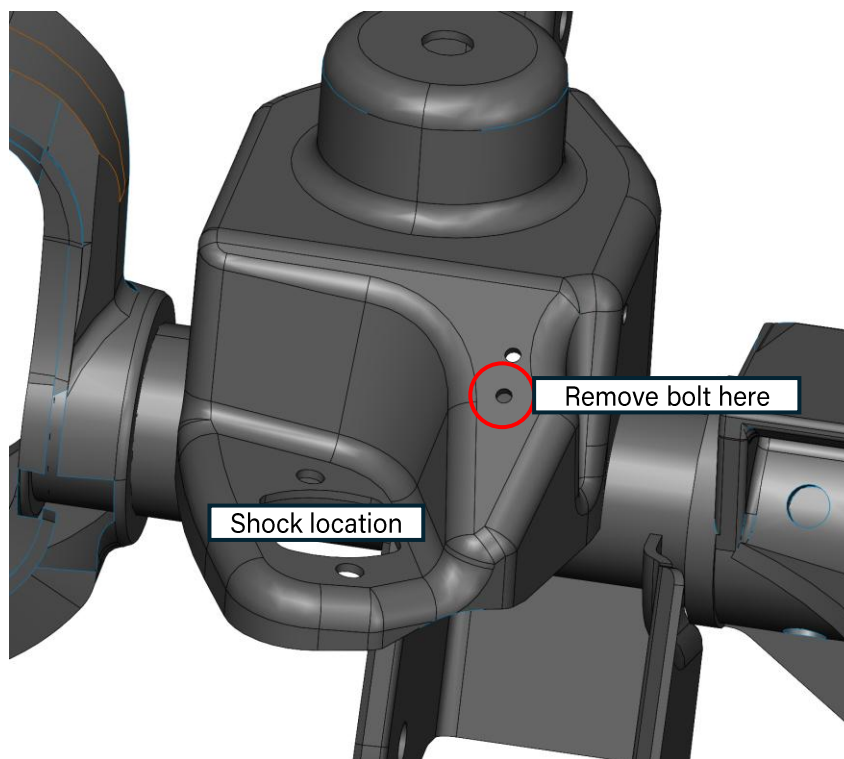


Old brake-line clips to be removed

The ABS cable should be completely free from the OEM brake line hose. At this point, it should only be connected at the sensor, and past the frame mount.

INSTALLATION INSTRUCTIONS

2. Behind the front shock, locate the securing bolt for the clamp on the hard line portion of the brake line. Loosen the bolt and remove the bracket from the mount.



Brake bracket location to be removed (CAD photo)

INSTALLATION INSTRUCTIONS

3. Remove the brake line caliper banjo bolt. Be ready to contain the brake fluid with rags or a catch bucket. With the banjo bolt removed, pull the brake line caliper fitting through the knuckle and out the other side.



Brake caliper banjo bolt (15mm)

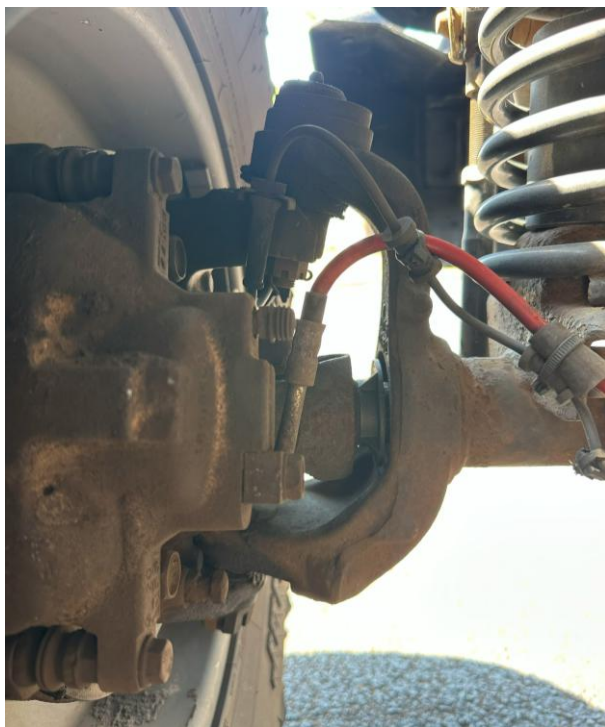
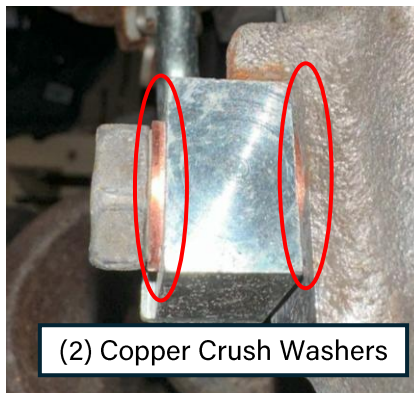
INSTALLATION INSTRUCTIONS

4. The front brake lines **ARE** side-specific. Make sure that you match each fitting to its proper side. Reference the photos below. The new banjo fittings included in the kit have a slight bend to them. Ensure this bend is pointing in, to the middle of the vehicle, and **away from the tire**. Torque the banjo bolt fitting to 26 ft-lbs.

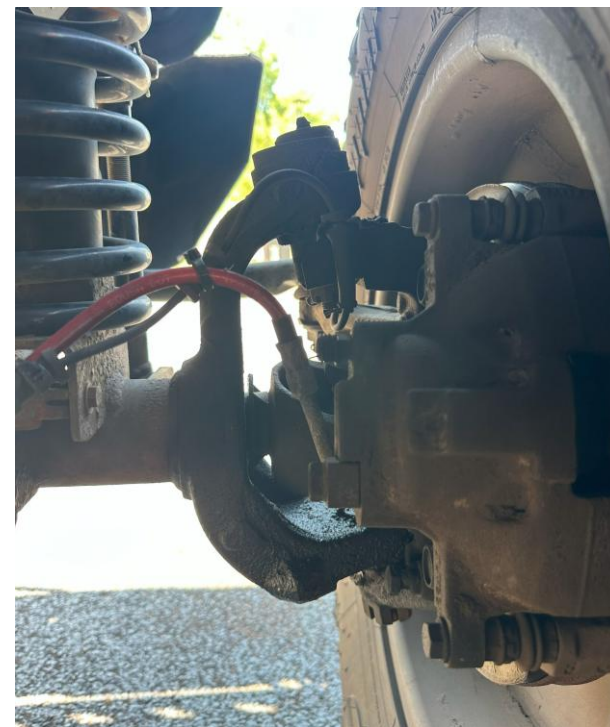
NOTE:

When reinstalling the banjo bolt, use the **new** copper crush washers that are included in this kit. Put one washer on either side of the fitting.

See the assembly photo below.



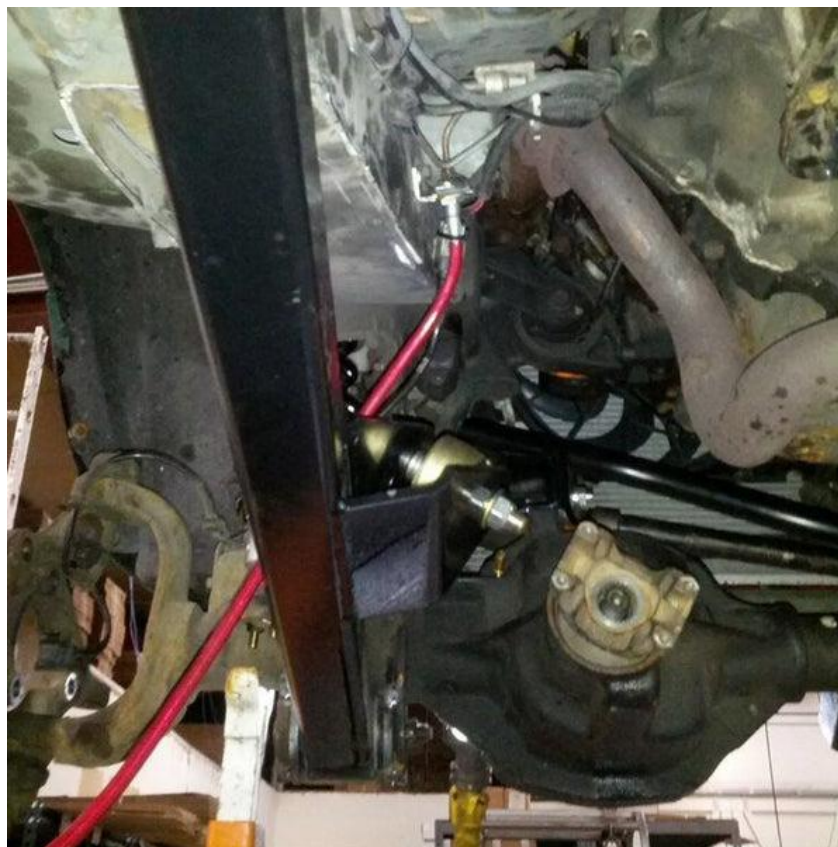
banjo fitting installed (front driver's side)



banjo fitting installed (front passenger's side)

INSTALLATION INSTRUCTIONS

5. Remove the bracket holding the brake line from the frame and replace it with the new included brake line bracket. Reuse the hardware. The mount will be located on the inside of the frame. Use the supplied spring lock to mount the female fitting into place at the bracket and into the hard line flare fitting. Tighten the flare fitting.



WJ Front brake line frame-end mount

INSTALLATION INSTRUCTIONS

6. If you are only installing new front brake lines, you may now bleed the brakes. If you are installing rear brakes at this time, top off the brake fluid reservoir first. It is best to keep brake fluid flowing during a brake line swap to keep air out of the lines. If air is introduced from the reservoir at any point, you will have to do a full brake bleed. It is easiest to do a brake bleed with another person, with the use of a brake bleed tool.



WJ Front brake line caliper-end mount

INSTALLATION INSTRUCTIONS

7. The installation is now complete. Please follow the post-installation checklist below before driving your vehicle.

WARNING:

Do not drive the vehicle until you are sure that there is no air remaining in the brake lines. Driving the vehicle with air in the brake lines will result in poor braking power, putting you and others at risk.

POST-INSTALLATION CHECKLIST:

- Caliper Banjo Bolts torqued to 26 ft-lbs
- Copper Crush Washers installed on both sides of the banjo fitting
- Frame mount brake line fitting torqued to 15 ft-lbs
- ABS cable has enough slack at full-flex
- No air is present in the brake lines
- Brake pedal is firm after brake bleed
- Lug nuts are torqued to manufacturer's specification

